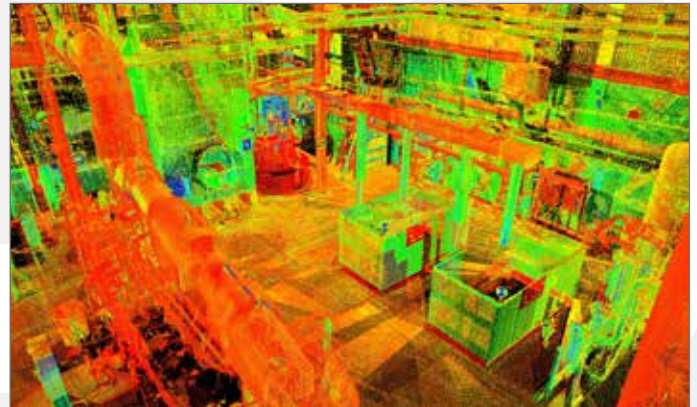
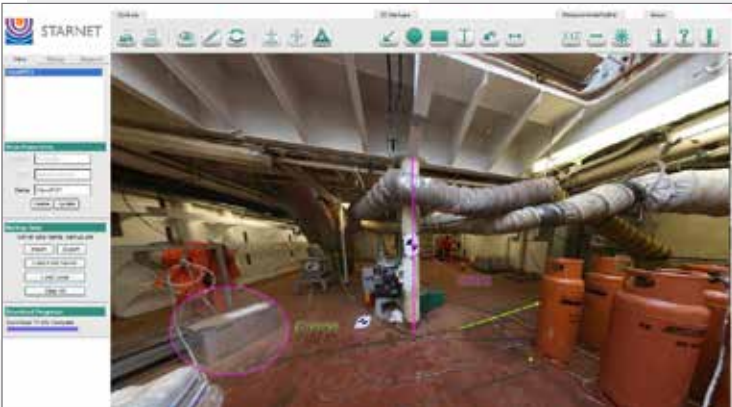


UTEC StarNet iSite



UTEC StarNet offers a game changing knowledge database portal which revolutionises both asset management and survey capabilities. StarNet has developed a unique collaborative asset management tool which allows any client to remotely access, via an encrypted web portal, each individual project from their desktop.

By means of the iSite, the user can tour any asset with 360° visualisation, accurate real-world on screen measurements and view / download all deliverables (such as drawings, 3D models, photos and reports). All information is derived from high definition laser scanning data, giving the user ultimate confidence.

This practical and user friendly tool is designed for everyday professionals who want to easily view laser scan point clouds and resulting deliverables without having to be an expert in laser scanning, CAD, or 3D modelling.

SQL server databases can be incorporated into the iSite, intelligently linking with the visualisation tool to revolutionise and consolidate asset management operations- proven to increase productivity and significantly reduce op-ex.

The iSite has been developed closely with clients in key industries - namely Oil & Gas, Nuclear & Energy, Telecoms and Civil Engineering.

UTEC StarNet iSite key features:

- 360° visualisation
- Accurate on-screen measurements
- No additional software to purchase
- Hot-spot issues for attention, tag assets
- Visual asset management
- HSE functions
- Reduced need to visit the asset
- Fully customisable look and feature-set
- Encrypted worldwide access
- All data available 24/7, always up-to-date

UTEC StarNet iSite consolidates:

- 360° panoramic photography
- Laser scan data
- Database information
- 2D CAD, 3D models
- Photographic records
- Photomontage
- Asset overview information
- Reports
- Multimedia (videos, flashes)
- Web 2.0 applications



UTEC
STARNET



UTECsurvey.com



LinkedIn